

Three Bridges Station Improvement Scheme

Proposal



This improvement project is brought to you by the **Crawley Growth Programme**



HM Government

Working in partnership with



Aerial view of Three Bridges Station



Introduction

Crawley Borough Council, Govia Thameslink Railway, Network Rail and West Sussex County Council are proposing to redevelop Three Bridges Station forecourt and some of the area around the station.

Using feedback gained from the original public consultation, changes are being suggested to the proposal in key areas, including:

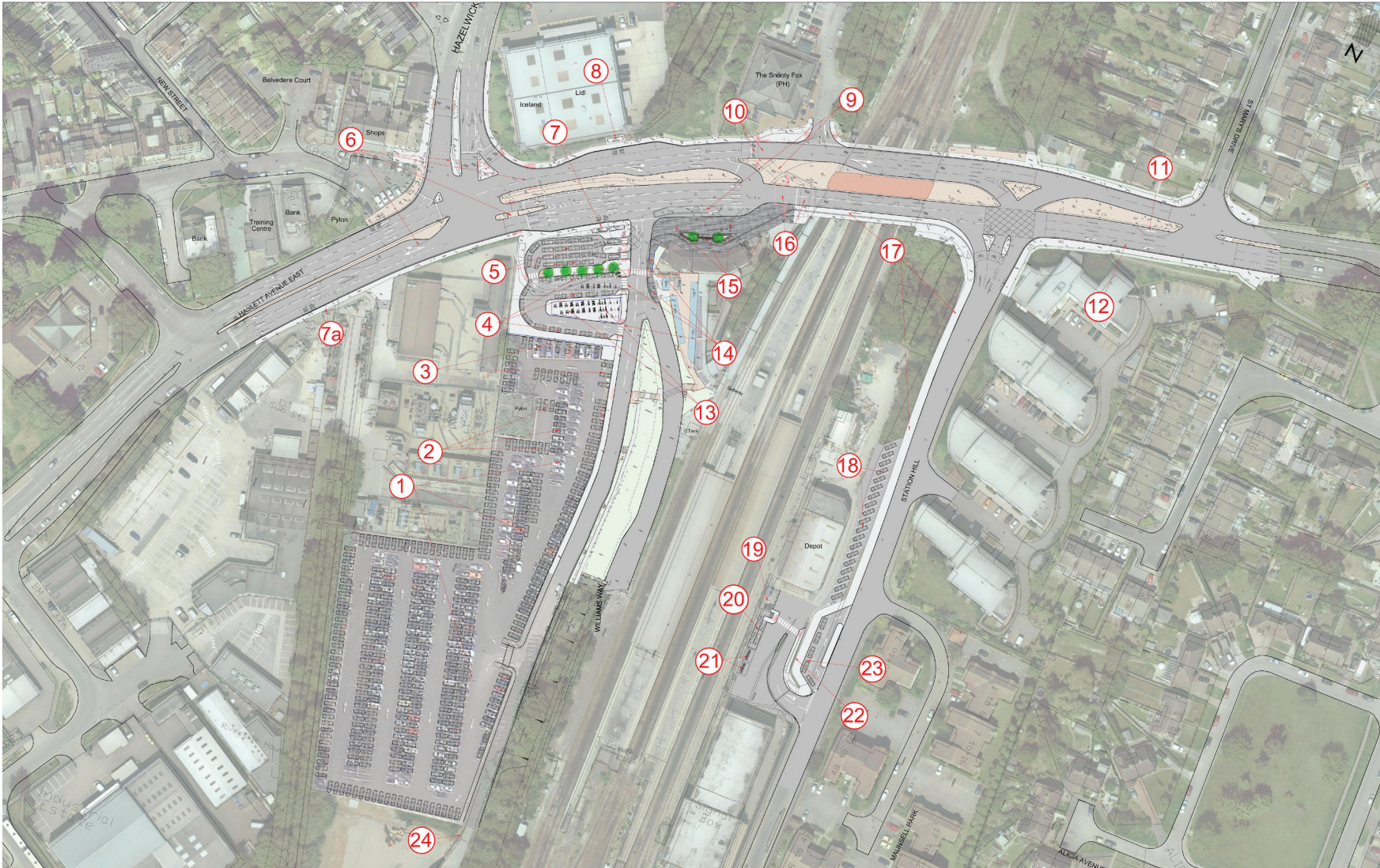
- The creation of additional parking spaces at the station
- Adding in a pick-up and drop-off point along Station Hill for up to five vehicles – creating an Eastern Access for bus passengers, pedestrians and cyclists to the station
- The provision at the front of the station for an enlarged taxi rank for up to 22 taxis in an accessible location with a two lane exit
- The provision of a 20-minute pick-up and drop-off area for up to 17 cars, which will be used for the occasional rail replacement bus services
- The introduction of additional pedestrian crossings for safely accessing and exiting the station
- The introduction of new walking and cycle routes into the station alongside new cycle parking
- The introduction of new “superhub” bus stops
- The addition of bus shelter and the relocation of a bus stop.

As part of the proposal we welcome any feedback which can be emailed to 3BridgesCorridor@crawley.gov.uk until Monday 5 March 2018.

An online version of this document will be available at:
www.regeneratingcrawley.org.uk/three-bridges



The revised proposal map



Key to revised proposal map

1. Reconfigure the existing car park to provide six additional spaces. The current capacity is 395. This reconfiguration will release space to construct the new taxi rank, drop-off and waiting area.
2. Possible location for up to 14 new electric vehicle charging spaces.
3. Ten disabled spaces located nearest to the station, a net gain of one additional space on existing provision.
4. New circular drop-off / pick-up area with a 20-minute maximum stay. The area allows for approximately 17 spaces and will be occasionally be utilised for bus replacement services, accommodating approximately eight buses.
5. New expanded taxi rank area (in a similar location to the existing rank) with access from the drop-off area. Space for approximately 22 taxis, with a two-lane exit and pick up.
6. Junction and traffic light improvements carried out by West Sussex County Council, including improved pedestrian crossings.
7. Additional bus shelter and a longer stop to cater for the closure of bus stop C (Ref 7a) for improved access from the station to buses into the town centre.
8. Possible additional bus shelter located on private land to improve the quality of the bus stop area for pedestrians.
9. Closure of the right-turn facility from the station onto Haslett Avenue East. Removal of the traffic island in front of the station.
10. Relocated traffic lights and pedestrian crossings following the closure of the right-turn facility.
11. Existing 'build out' removed by West Sussex County Council to increase road space and improve flow for westbound traffic .
12. Current lane designation changed to left-turn only by West Sussex County Council.
13. Motorcycle parking area with space for approximately 50+ motorcycles.
14. Footpath extended to allow safe pedestrian and cyclist access from crossing to remodelled forecourt, to the car park, drop-off area and taxi rank. This will require the removal of the existing fence to the garden of the station house. There will be additional pedestrian crossings from the waiting and drop-off areas.
15. Forecourt improvements to provide new, larger, better quality public space and gateway feature to the station. Proposals include high quality paving, raised planters, trees and soft landscaping. There will be feature steps and ramp to enhance disabled access. Installation of a row of trees between drop-off area and taxi rank.
16. Relocated traffic lights and pedestrian crossings following the closure of the right-turn facility.
17. Footpath extended to remove kerb-side traffic lane, allowing for wider shared foot / cycle path linking to the station and cycle parking facilities via Station Hill.
18. Removal of the existing self seeded trees and shrubs, which are not protected by Tree Preservation Orders, to allow the construction of an extended staff car parking area for the depot, enabling the construction of the Eastern Access drop-off area.
19. New pedestrian entrance to the station.
20. New disability compliant pedestrian ramp and steps to allow access to platform level.
21. Additional two-tier bicycle shelter for approximately 40 bicycles.
22. New retaining wall to allow the construction of the Eastern Access drop-off point.
23. Eastern access drop-off point for five vehicles.
24. Potential new cycle route from Furnace Green, linking to Three Bridges Station, Worth Park Avenue and routes to Manor Royal and the town centre.

Artist's impression of forecourt



Next steps for the scheme

- Concept Designs agreed by all the major stakeholders to enable a report to Crawley Borough Council Cabinet on 21 March 2018 asking for permission to move to the next phase of detailed design;
- The next phase of design will further develop the concept to a level of detail to enable a full planning application
- Construction specification details will be completed to enable tendering of the project subject to planning permission
- A procurement process will be undertaken to let the construction contract and appoint a contractor to undertake the works.

The intention is for the scheme to commence on site by September 2019, however, this may change and you can get regular updates by visiting www.regeneratingcrawley.org.uk/three-bridges

We are keen to hear what you think about the proposal as we will use your feedback to inform the development of the detailed designs.

Feedback can be emailed to 3BridgesCorridor@crawley.gov.uk by 5 March 2018.

Information sessions

We are holding several information sessions throughout February, please come along and talk to us about the proposals.

Monday 12 February – 5-7.30pm, Three Bridges Station

Wednesday 14 February – 10am-4pm, County Mall

Thursday 22 February – 4-7pm, Crawley Library

Saturday 24 February – 10am-2pm, Three Bridges Station

Tuesday 27 February – 6.30 to 9.30am, Three Bridges Station

Wednesday 28 February – 2.30-5.30pm, Three Bridges Station

In addition to the information sessions, we will be working closely with key stakeholders which include community forums.

www.regeneratingcrawley.org.uk/three-bridges



HM Government